

Esophageal Cancer in South Carolina

Where we are

Text

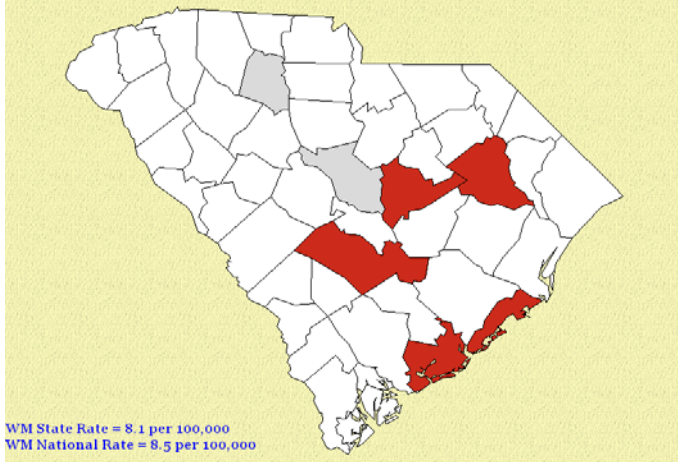
Esophageal Cancer Facts

Text

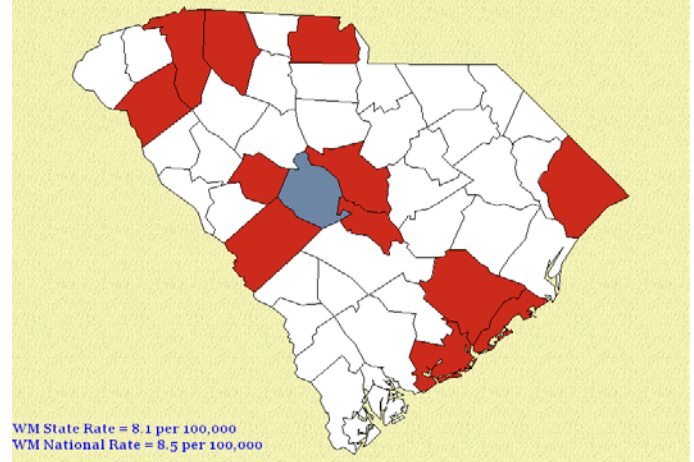
Call to Action!

Text

Esophagus, Black Male Incidence 2001-2005



Esophagus, White Male Incidence 2001-2005

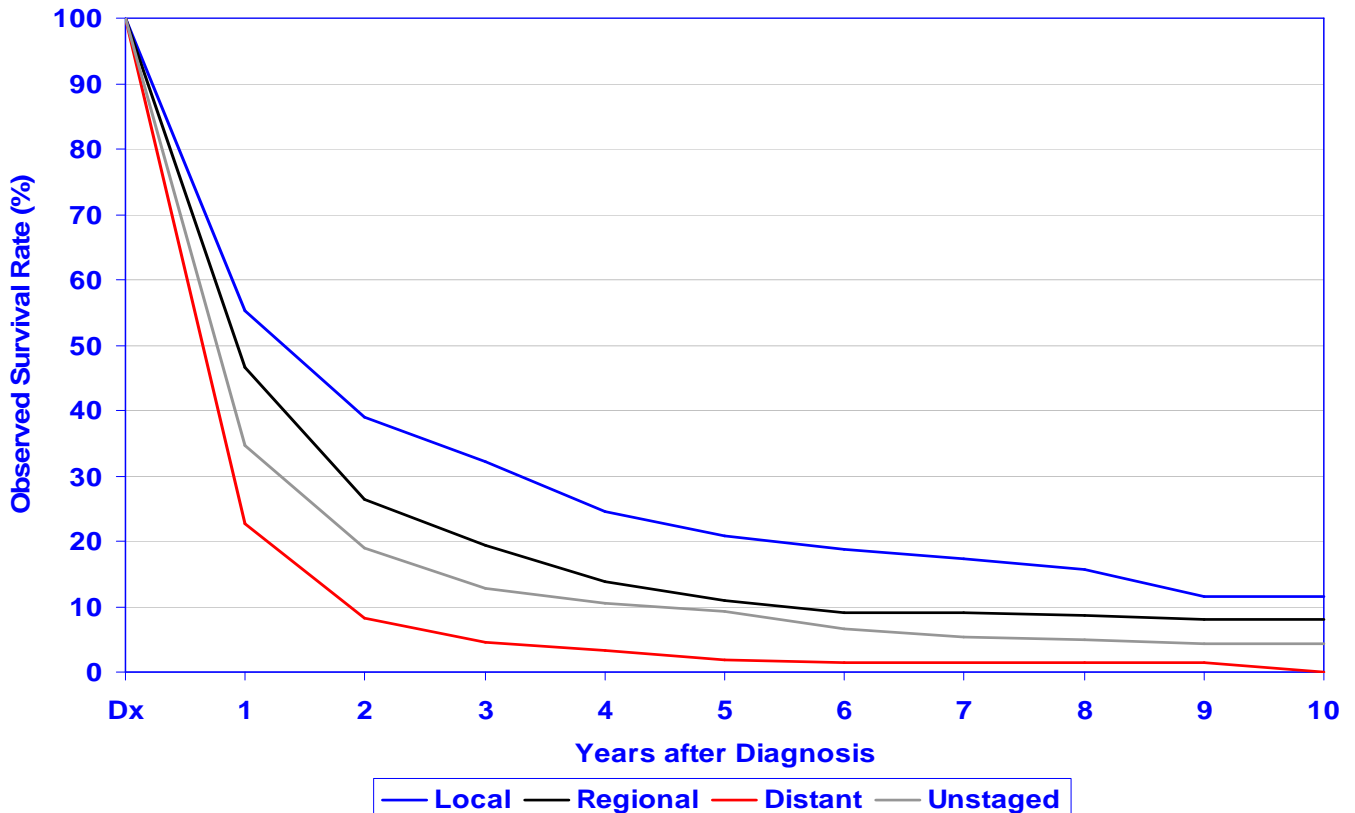


* Counties that are not shaded have fewer than 20 cases/deaths of cancer over the 5 year period (2001-2005). Working with small numbers can lead to instability in the calculated age-adjusted rates for mortality and incidence. As a result statistics for these counties are not displayed.

Black Males: Of the six counties with adequate esophageal cancer cases to rate, four counties were worst in the state: Charleston, Florence, Orangeburg, and Sumter (Grade F). Richland and Union counties were no different from the state and nation, Grade C.

White Males: Of the twelve counties with adequate cases to rate, 11 counties rated worst in the state: Aiken, Anderson, Berkeley, Calhoun, Charleston, Greenville, Horry, Richland, Saluda, Spartanburg, and York (Grade F). Lexington county rated Grade C, no different.

Text



Note: excludes *in situ* cancers and children (ages 0-19)

Source: South Carolina Central Cancer Registry

For S.C. citizens diagnosed with esophageal cancer, five-year survival is dismal for all stages of disease at diagnosis, ranging from 21% for localized disease to 2% for distant disease. Overall five-year survival for all stages is 11%.

Text