

Cervical Cancer in South Carolina

Where are we

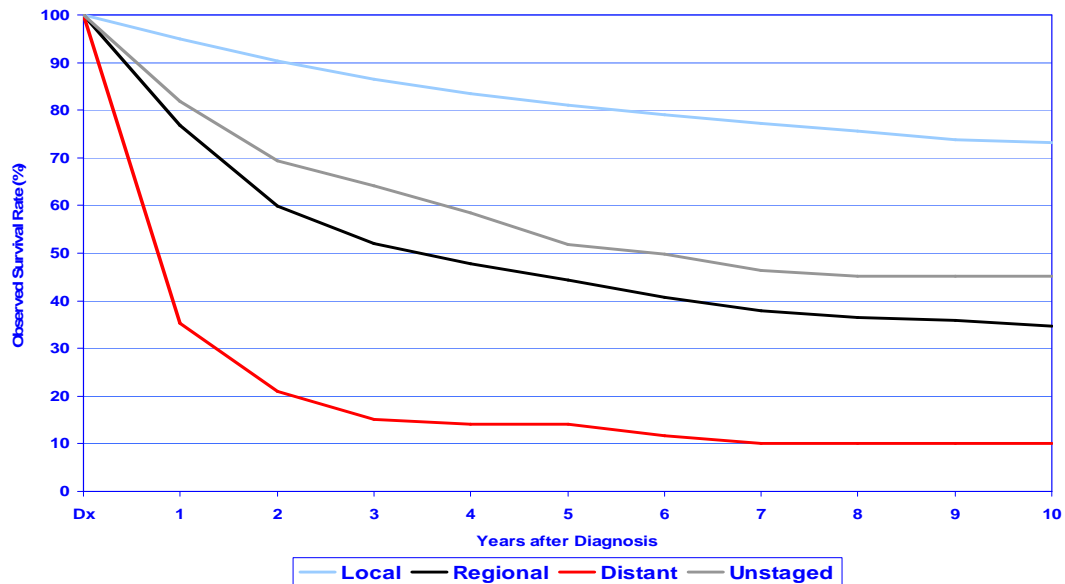
Cervical Cancer Facts

South Carolina ranks 16th highest in the nation for cervical cancer incidence and 13th highest in the nation for cervical cancer mortality.

Black women have a 58% greater incidence of cervical cancer than white women within the state of South Carolina.

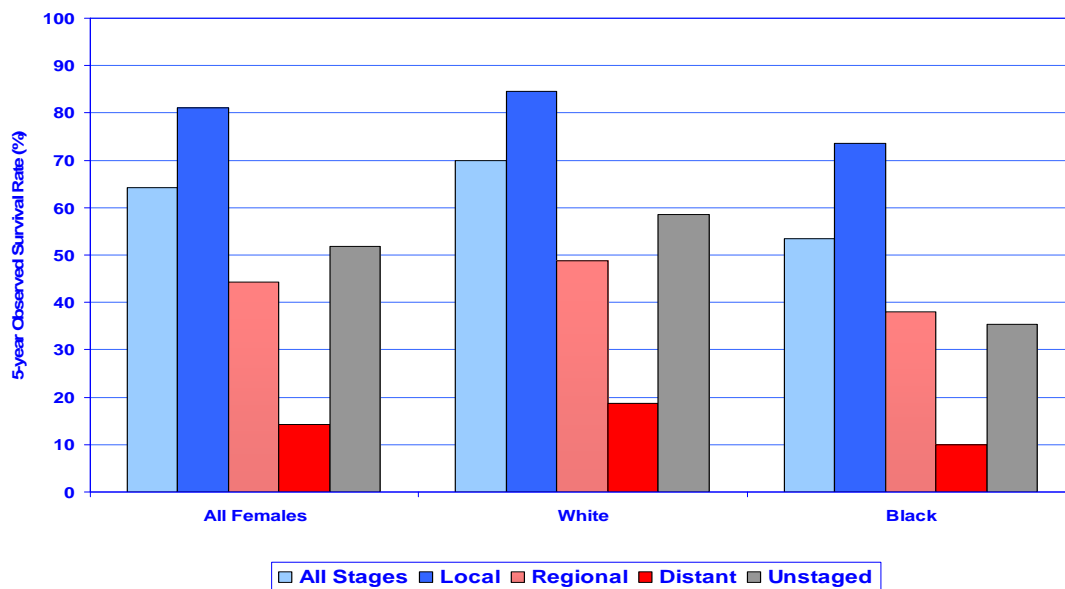
Black women twice as likely to die from cervical cancer than white women in South Carolina.

Call to Action!



Note: excludes *in situ* cancers and children (ages 0-19) **Source:** South Carolina Central Cancer Registry

- S.C. women diagnosed with locally staged cervical cancer have better than 70% survival over a ten year period.
- However, S.C. women who are diagnosed with regionally staged cervical cancer have less than a 50% survival rate after three years.
- S.C. women diagnosed with cervical cancer at the distant stage have less than 35% survival rates after one year.



Note: excludes *in situ* cancers and children (ages 0-19) **Source:** South Carolina Central Cancer Registry

S.C. women with cervical cancer diagnosed at the earliest stage, before any invasion or spread of cancer cells, have greater than an 80% chance of survival for five years.

However, when S.C. women are diagnosed with breast cancer after regional or distant spread has occurred, the chance of surviving five years drops to 44% then 14%, respectively.

White women in S.C. have higher five-year survival rates than black women for cervical cancer at each stage of disease at diagnosis.