

## Breast Cancer in South Carolina



**Advocates Speak out in support of BCN and Medicaid Treatment act.**



### Where we are

Screening

Education

### Statistics for Breast Cancer, 2001-2005

- South Carolina ranks 35th in the nation for all race/sex female breast cancer incidence, and 19th in the nation for mortality.
- White women have a significantly higher incidence rate than black women.
- Black women have a significantly higher mortality rate than white women.
- Black women have 12% fewer cases of breast cancer than white women, but have a 39% greater risk for mortality.

Age-adjusted incidence and mortality rates can be found in Appendix A on page ##.

### Call to Action!

- Legislation -

Support legislation to increase breast and cervical cancer screening  
Increase breast cancer screening messages in your community

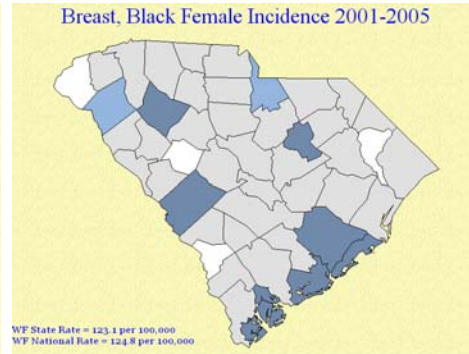
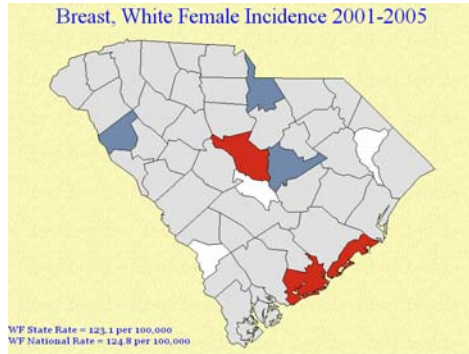
- Lifestyle -

Encourage women to be screened for breast cancer  
Eat more fruits and vegetables  
Maintain a healthy weight  
Increase/promote physical activity  
Do not smoke

- Treatment -

Provide meeting space for cancer support groups  
Encourage participation in clinical trials

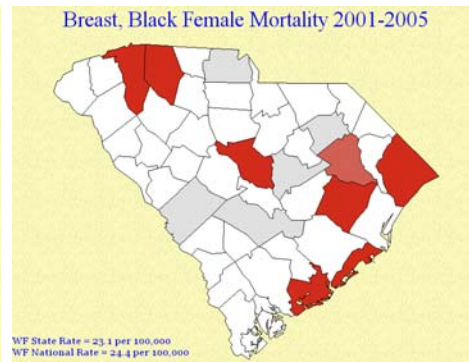
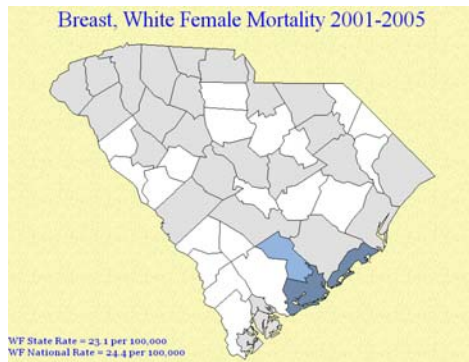
A	B	C	D	E	F	NS*
---	---	---	---	---	---	-----



\* Counties that are not shaded have fewer than 20 cases/deaths of cancer over the 5 year period (2001-2005). Working with small numbers can lead to instability in the calculated age-adjusted rates for mortality and incidence. As a result statistics for these counties are not displayed.

**White females:** Charleston and Richland counties rated worst in the state for breast cancer incidence, Grade F. Abbeville, Lancaster, and Sumter counties rated best, Grade B. All other counties rated Grade C, no different than the state or nation for cancer incidence.

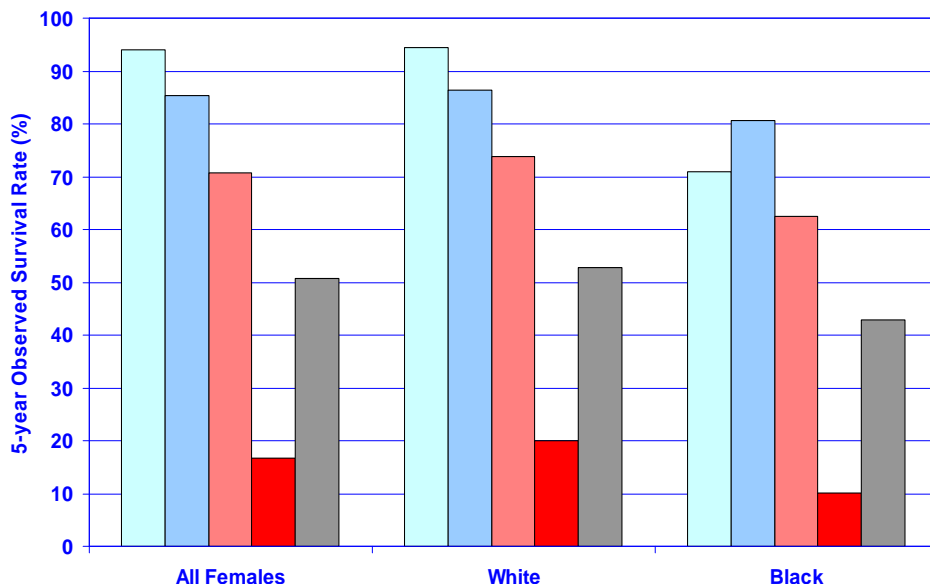
**Black females:** Anderson and Lancaster counties rated best in the state, Grade A. Aiken, Beaufort, Charleston, Laurens, and Lee counties rated better than the state at Grade B. All other counties rated Grade C, no different than the state or nation for cancer incidence.



\* Counties that are not shaded have fewer than 20 cases/deaths of cancer over the 5 year period (2001-2005). Working with small numbers can lead to instability in the calculated age-adjusted rates for mortality and incidence. As a result statistics for these counties are not displayed.

**White females:** While Charleston county rated poorly for cancer incidence, it rated best in the state for breast cancer deaths with Grade A. Dorchester county rated better than the state or nation with Grade B. All other counties rated Grade C, no different.

**Black females:** Six counties rated worst in the state for deaths due to breast cancer, Grade F: Charleston, Horry, Greenville, Richland, Spartanburg, and Williamsburg. Florence county rated worse than the state or nation, Grade D. All other counties rated no different, Grade C.



S.C. women with breast cancer diagnosed at the earliest stage, before any invasion or spread of cancer cells, have a 95% chance of survival for five years.

However, when S.C. women are diagnosed with breast cancer after regional or distant spread has occurred, the chance of surviving five years drops to 70% then 17%, respectively.

White women in S.C. have higher five-year survival rates than black women for breast cancer at each stage of disease at diagnosis.

Legend: In situ (light blue), Local (medium blue), Regional (red), Distant (dark red), Unstaged (grey)

Note: excludes *in situ* cancers and children (ages 0-19)  
Source: South Carolina Central Cancer Registry